

KARIBAN

REFERENCE : K277

SIZES : XS_S_M_L_XL_XXL_3XL

COMPOSITION :

Main fabric : Polyester / Combed cotton pique 65/35 - 200 65% polyester / 35%cotton

WEIGHT :

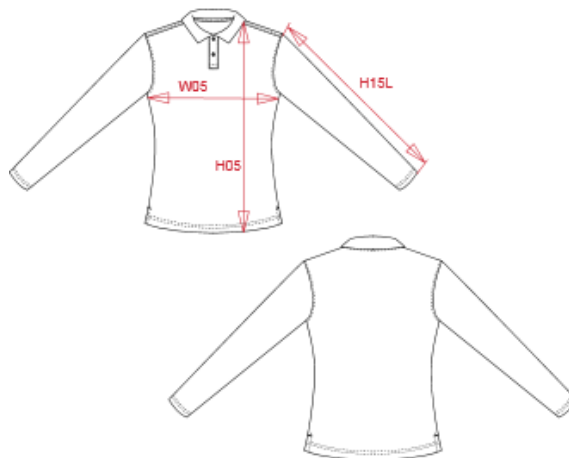
Main fabric : 200 gsm

TECHNICAL DETAIL :

Anti-pilling & anti-bacterial

ARTICLE WEIGHT :

218 gr/pc



DESCRIPTION
Français : Polo manches longues femme
English : Ladies' long-sleeved polo shirt
Nederlands : Damespolo lange mouwen
Deutsch : Langarm-Polohemd für Damen
Español : Polo manga larga mujer
Italiano : Polo donna maniche lunghe
Português : Polo de senhora manga comprida

COLORS	PANTONE SERIGRAPHIE
White	White
Black	Black
Navy	433C
Dark grey	447C
Oxford grey	Based on Cool gray 7C

MEASUREMENT							
Description	XS	S	M	L	XL	XXL	3XL
W05 (M) 1/2 largeur poitrine à 1.5cm de l'emmanchure / 1/2 chest width at 1.5cm below armhole	43	46	49	52	55	58	61
H05 (M) Hauteur totale / Total height	60	62	64	66	68	70	72
H15L (M) Longueur manche longue / Long sleeve length	57,75	58,75	59,75	60,75	61,75	62,75	63,75

CARE LABEL

PACKING	
Box	30 pcs / box XS => L:60cm W:40cm H:20cm GW:7.1kg NW:6.1kg S => L:60cm W:40cm H:20cm GW:7.6kg NW:6.6kg M => L:60cm W:40cm H:20cm GW:7.9kg NW:6.9kg L => L:60cm W:40cm H:20cm GW:8.4kg NW:7.4kg XL => L:60cm W:40cm H:20cm GW:8.8kg NW:7.8kg XXL => L:60cm W:40cm H:22cm GW:9.3kg NW:8.3kg 3XL => L:60cm W:40cm H:22cm GW:9.9kg NW:8.9kg